



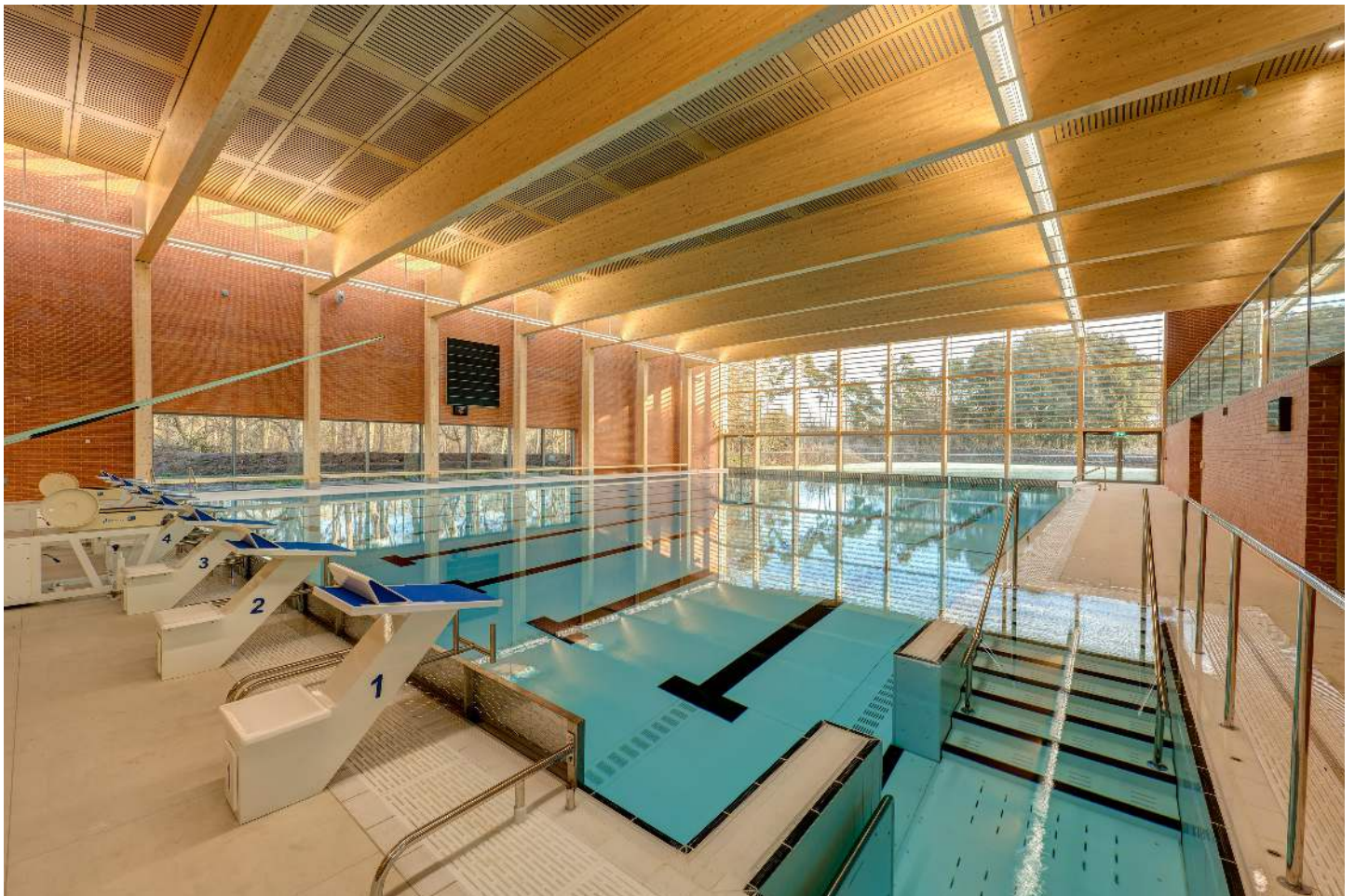
WRIGHTFIELD
POOLS stainless steel pools
& moving pool floors

Eton College Case study and Project Overview

What is the Eton College Project?

January 2022 - Wrightfield Pools was commissioned to design and install a custom moveable pool floor for Eton College, providing them with a flexible swimming environment catering to multiple activities and user needs.

The moveable pool floor can be mechanically adjusted to any depth from 0 to 3.5 meters. This innovative system combines advanced engineering with safety and ease of use, fully complying with EU Standard IS EN 13451-11:2004 and the "Managing Health and Safety in Swimming Pools" guidelines (HSG179).

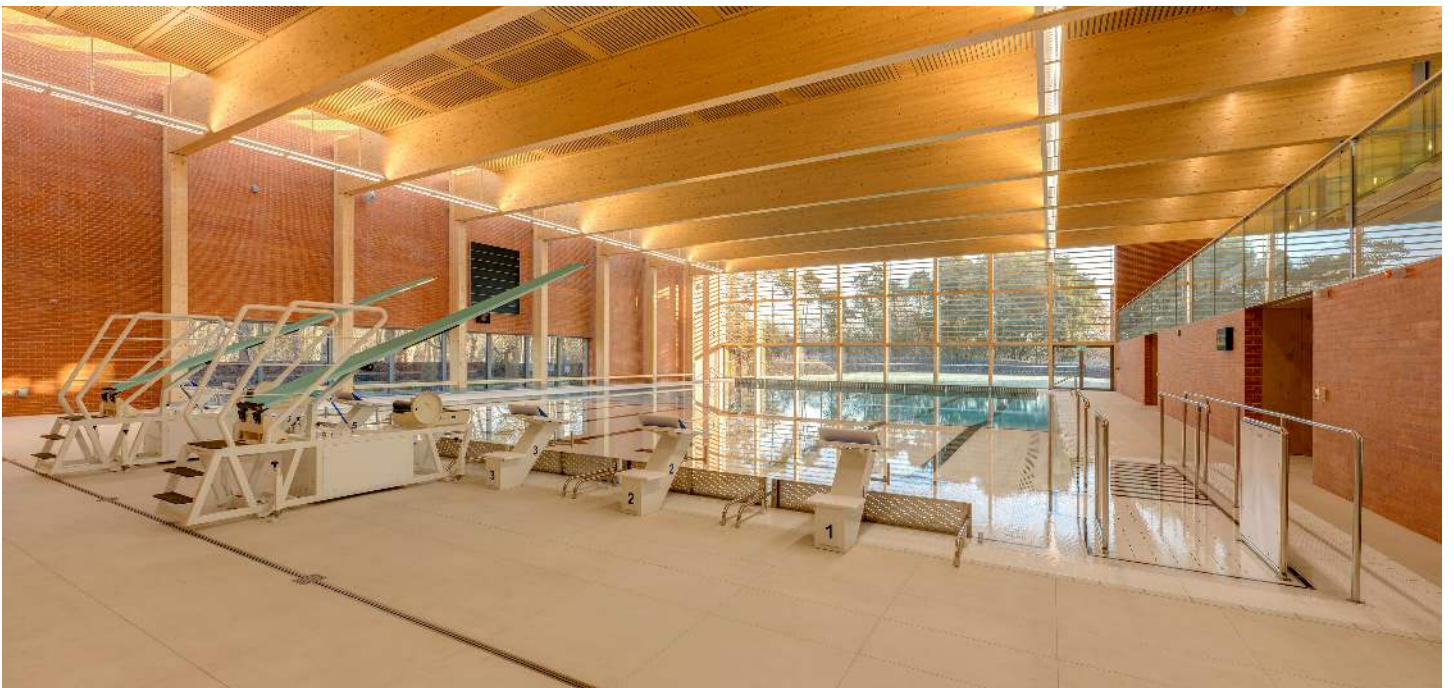


Custom design:	<p>The pool floor, measuring 17.0m x 9.0m, is specifically tailored to Eton College's pool specifications, ensuring an optimal fit and functionality.</p>
Durable construction:	<p>Made with 20mm white HDPE embossed plastic decking and black UV-resistant HDPE lane markings, the floor is built to resist chemicals commonly found in commercial pools. The perimeter is finished with white UPVC for added durability.</p>
Smooth and controlled operation:	<p>The floor is powered by a hydraulic system with direct drive and two rams, allowing smooth and reliable movement at speeds up to 500 mm per minute. Rotational moulded, foam-filled cells maintain buoyancy, ensuring the floor stays level and stable.</p>
Advanced control system:	<p>A poolside HMI touchscreen panel allows easy control of the pool floor and integrated pool access lift. The system provides three levels of operator control, protected by individual access codes based on staff qualifications. It also displays error codes, maintenance logs, and real-time feedback from the hydraulic system.</p> <p><u>Innovative Pool Access Lift</u></p> <p>The project also included a combined pool access lift and self-depositing steps system, ensuring accessibility for all users, including disabled bathers. The lift platform measures 3.0m x 1.25m and can travel between 0.0m and 1.5m depths, synchronised with the moving pool floor.</p> <p>Powered by a hydraulic scissor lift, this system offers reliable, smooth transitions and is controlled via the same poolside HMI panel.</p>
Self depositing steps:	<p>The 9-tread steps, 1.25m wide, automatically adjust along with the lift platform and pool floor. The platform is electrically interlocked with the moving floor, preventing any misalignment during operations.</p>



Safety

The system prevents the lift from being lowered below the floor's depth, enhancing safety and preventing accidents.



Conclusion

The moving pool floor and access lift installation at Eton College provides a versatile swimming environment that can accommodate everything from competitive swimming to beginner lessons and inclusive access for all users. The custom-built solution enhances the facility's functionality and safety, offering an exceptional experience for swimmers and facility managers.

About Wrightfield Pools - Our moveable pool floors and access systems are designed to meet the specific needs of each facility, ensuring maximum usability and safety while maintaining compliance with all relevant standards. For more information, please call **01379 872800** or email sales@wrightfieldpools.co.uk